



10 PARK DRIVE E14  
**2 bedroom apartment**

**£1,350,000**  
SOLD

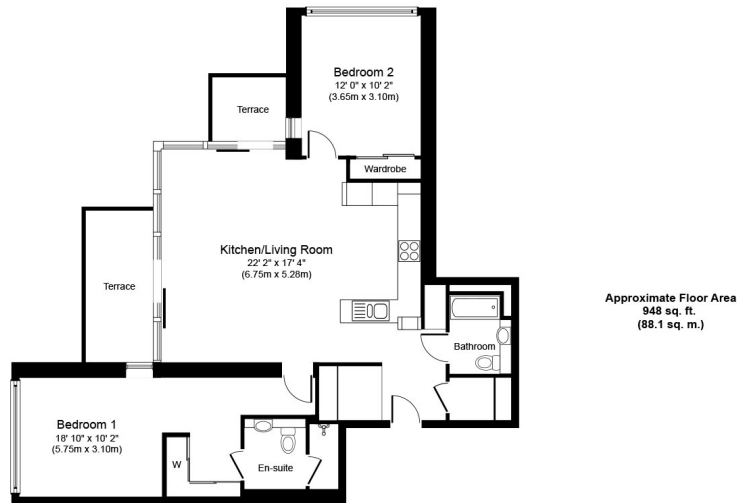




# 10 PARK DRIVE E14

We present a luxurious sixteenth-floor apartment in the highly regarded 10 Park Drive development in Harbour Quay, Canary Wharf E14. This 2020 property offers a wealth of elegant and modern living amenities. The apartment spans nine hundred and forty-eight square feet of high-end contemporary living in aesthetically pleasing Canary Wharf, dubbed the world's business hub. The apartment has an airy lounge, a cutting-edge open-plan kitchen, large bedrooms, a master with an en-suite and a stylish bathroom. The apartment has stunning City skyline views, and residents enjoy state-of-the-art leisure facilities, including a spa and hydrotherapy pool. The 13th-floor sky garden has breathtaking Canary Wharf views. We highly recommend this apartment and 10 Park Drive.

Borough: Tower Hamlets\* Council Tax: TBC\* EPC: TBA Lease Term: 250 years\* Service Charge: £7,302\* Ground Rent: £500\*  
Nearest Station: South Quay (0.18 miles) Material Information: [www.alexneil.com/material-information](http://www.alexneil.com/material-information)



**Canary Wharf & Docklands Office**  
**2 Westferry Road, Canary Wharf, London E14 8JT**

**t: 020 7537 9859 e: [canarywharf@alexneil.com](mailto:canarywharf@alexneil.com)**

Disclaimer: Property descriptions are subjective and used in good faith as an opinion rather than statements of fact. The owner provided information relating to title, tenure, service charges and ground rent information. Therefore, please make specific enquiries to ensure that our descriptions match your expectations of the property. Floor plan measurements are approximate and for illustrative purposes only. Furthermore, we have not tested any services, systems or appliances at this property. And we strongly recommend that you verify all the provided information on inspection and that your surveyor and conveyancer further confirm details. Also, market conditions and property values regularly fluctuate. And showcased sold properties demonstrate our previous successes rather than indicate live property values. \*As advised by the owner. \*\*Property sold subject to contract.

# ALEX NEIL

ESTATE AGENTS SINCE 1984

2024 signifies our **40th Anniversary**, and we are immensely proud to have reached this impressive longevity milestone. In celebration, we launched an **exceptional promotion** for sellers, affording them increased marketing exposure for free!

**40 years of expertise:** With four decades of experience, we bring a wealth of knowledge and expertise. Our durability is a testament to the trust satisfied clients place in us. We understand the nuances of the diverse neighbourhoods we cover. Our local expertise allows us to provide tailored solutions, whether you're buying or selling, allowing you to move with confidence.



ALEX NEIL

ESTATE AGENTS SINCE 1984

[www.alexneil.com](http://www.alexneil.com)