



ANTWERP WAY E16  
**2 bedroom apartment**

**£320,000**  
SOLD

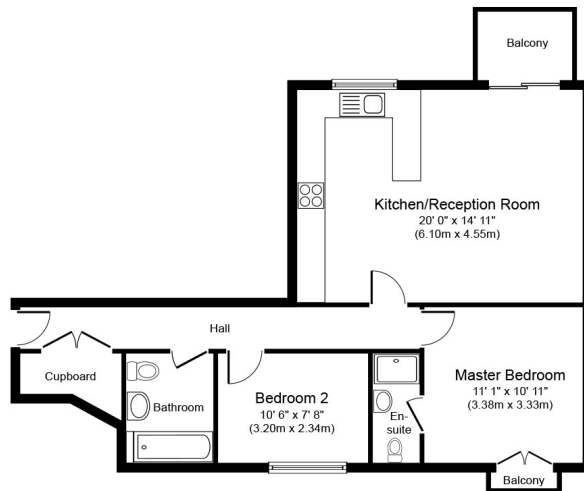




# ANTWERP WAY E16

A fantastic two-bedroom apartment, located in the popular Antwerp Way. This newly built property is in excellent condition throughout. Internally comprising of an open plan reception room with fitted kitchen, two double bedrooms, one with a stylish en-suite and a luxurious three piece bathroom. Additional benefits include a private balcony, storage space and residents parking. Perfectly located for King George V Station allowing superb transport links and also within easy reach of the Woolwich Ferry Service. An early inspection of this contemporary apartment is highly recommended.

Borough: Newham\* Council Tax: B\* EPC: C Lease Term: TBA Service Charge: TBA Ground Rent: TBA  
Nearest Station: King George V (0.15 miles) Material Information: [www.alexneil.com/material-information](http://www.alexneil.com/material-information)



First Floor

Approximate Floor Area  
682 sq. ft.  
(63.41 sq. m.)



**Canary Wharf & Docklands Office**  
2 Westferry Road, Canary Wharf, London E14 8JT

t: 020 7537 9859 e: [canarywharf@alexneil.com](mailto:canarywharf@alexneil.com)

Disclaimer: Property descriptions are subjective and used in good faith as an opinion rather than statements of fact. The owner provided information relating to title, tenure, service charges and ground rent information. Therefore, please make specific enquiries to ensure that our descriptions match your expectations of the property. Floor plan measurements are approximate and for illustrative purposes only. Furthermore, we have not tested any services, systems or appliances at this property. And we strongly recommend that you verify all the provided information on inspection and that your surveyor and conveyancer further confirm details. Also, market conditions and property values regularly fluctuate. And showcased sold properties demonstrate our previous successes rather than indicate live property values. \*As advised by the owner. \*\*Property sold subject to contract.

# ALEX NEIL

ESTATE AGENTS SINCE 1984

2024 signifies our **40th Anniversary**, and we are immensely proud to have reached this impressive longevity milestone. In celebration, we launched an **exceptional promotion** for sellers, affording them increased marketing exposure for free!

**40 years of expertise:** With four decades of experience, we bring a wealth of knowledge and expertise. Our durability is a testament to the trust satisfied clients place in us. We understand the nuances of the diverse neighbourhoods we cover. Our local expertise allows us to provide tailored solutions, whether you're buying or selling, allowing you to move with confidence.



ALEX NEIL

ESTATE AGENTS SINCE 1984

[www.alexneil.com](http://www.alexneil.com)