



CAPSTAN SQUARE E14  
**4 bedroom town house**

**£775,000**  
SOLD





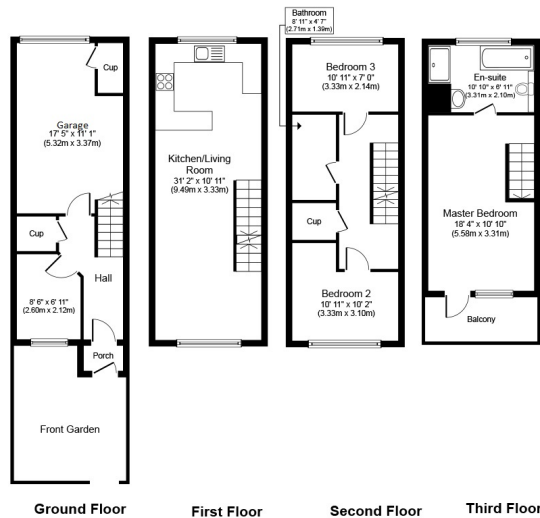
# CAPSTAN SQUARE E14

A large four-bedroom Town House, set in a quiet square in the of Isle of Dogs. Set out over four floors and comprising a stylish open plan kitchen and lounge, four double bedrooms and two bathrooms. Benefits include uninterrupted views over the Thames and parking. Capstan Square is superbly located by the River Thames and offers excellent transport links and the many amenities of Canary Wharf



Borough: Tower Hamlets\* Council Tax: D\* EPC: C

Nearest Station: Crossharbour (0.35 miles) Material Information: [www.alexneil.com/material-information](http://www.alexneil.com/material-information)



Approximate Floor Area  
1,324 sq. ft.  
(123.0 sq. m.)



**Canary Wharf & Docklands Office**  
2 Westferry Road, Canary Wharf, London E14 8JT

t: 020 7537 9859 e: [canarywharf@alexneil.com](mailto:canarywharf@alexneil.com)

Disclaimer: Property descriptions are subjective and used in good faith as an opinion rather than statements of fact. The owner provided information relating to title, tenure, service charges and ground rent information. Therefore, please make specific enquiries to ensure that our descriptions match your expectations of the property. Floor plan measurements are approximate and for illustrative purposes only. Furthermore, we have not tested any services, systems or appliances at this property. And we strongly recommend that you verify all the provided information on inspection and that your surveyor and conveyancer further confirm details. Also, market conditions and property values regularly fluctuate. And showcased sold properties demonstrate our previous successes rather than indicate live property values. \*As advised by the owner. \*\*Property sold subject to contract.

**ALEX NEIL**

ESTATE AGENTS SINCE 1984

2024 signifies our **40th Anniversary**, and we are immensely proud to have reached this impressive longevity milestone. In celebration, we launched an **exceptional promotion** for sellers, affording them increased marketing exposure for free!

**40 years of expertise:** With four decades of experience, we bring a wealth of knowledge and expertise. Our durability is a testament to the trust satisfied clients place in us. We understand the nuances of the diverse neighbourhoods we cover. Our local expertise allows us to provide tailored solutions, whether you're buying or selling, allowing you to move with confidence.



ALEX NEIL

ESTATE AGENTS SINCE 1984

[www.alexneil.com](http://www.alexneil.com)