



CALDER COURT SE16
2 bedroom apartment

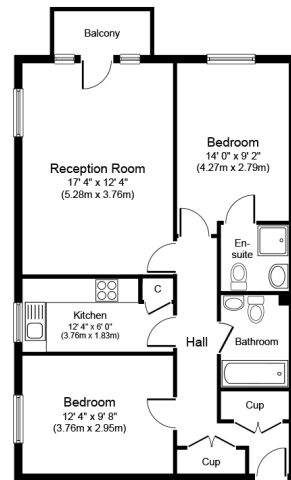
£500,000
SOLD



CALDER COURT SE16

A two-bedroom Riverside apartment with stunning views, situated in the desired Calder court. This superb property is presented in good condition throughout and internally comprises a large lounge, separate kitchen, two double bedrooms and two bathrooms. Benefits include a private balcony with direct River Views, storage space and secure parking. Ideally placed for transport links and amenities.

Borough: Southwark* Council Tax: F* EPC: C Lease Term: 100* Service Charge: £3,400* Ground Rent: £50*



Second Floor

Approximate Floor Area
735 sq. ft.
(68.0 sq. m.)



Rotherhithe & Bermondsey Office
146 Lower Road, London SE16 2UG

t: 020 7237 6767 e: rotherhithe@alexneil.com

Disclaimer: Property descriptions are subjective and used in good faith as an opinion rather than statements of fact. The owner provided information relating to title, tenure, service charges and ground rent information. Therefore, please make specific enquiries to ensure that our descriptions match your expectations of the property. Floor plan measurements are approximate and for illustrative purposes only. Furthermore, we have not tested any services, systems or appliances at this property. And we strongly recommend that you verify all the provided information on inspection and that your surveyor and conveyancer further confirm details. Also, market conditions and property values regularly fluctuate. And showcased sold properties demonstrate our previous successes rather than indicate live property values. *As advised by the owner. **Property sold subject to contract.

ALEX NEIL

ESTATE AGENTS SINCE 1984